

PRODUCT OVERVIEW

The PX-Q655 Flashfinder® aerial leak detection set is state of the art in precision fiber optic fault location. This set is comprised of the patented PX-Q650 Flashfinder® detection gun and a PX-Q404 tracer source. It is designed to find infrared radiation from firearm, rodent, or burn damage in aerial cables as well internal splice enclosure fiber faults. While an OTDR can find approximate distance to a problem, pinpointing problems in the real world is more often about luck, intuition, or trial and error.

The patented PX-Q655 can locate aerial cable faults from ground level or a single bucket location. It can also be used to pinpoint faults inside a splice enclosure or hub using interchangeable heads. To use the Flashfinder® probe, simply squeeze and hold the trigger and sweep over a suspect area.



PX-Q650

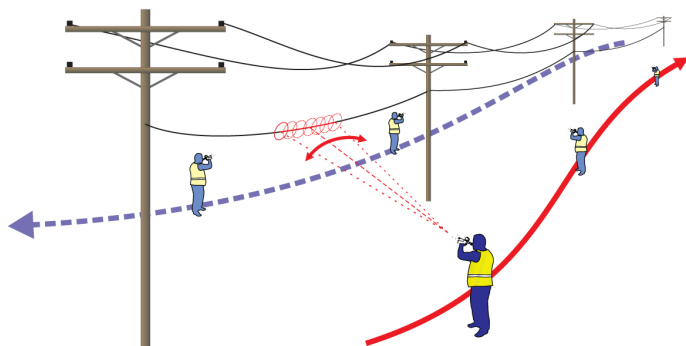


PX-Q404



US PATENT 7,826,043B1 AND PATENTS PENDING

Note: Photos may vary from actual product



FEATURES

- Full two year warranty
- Long range and local heads
- Sunlight and fluorescent light immunity
- Easy to use red-dot sighting scope
- Standard 9V battery operation
- All metal construction

APPLICATIONS

- Aerial damage location / verification
- Fault location in dead zones
- Fault location in splice enclosures and hubs
- Fiber tracing end to end (300km+)
- Fiber tracing by mid-span leakage
- Fiber tracing by local bend
- Fiber bend and break pinpointing
- Connector damage detection
- Bulkhead adapter troubleshooting
- Live port detection
- Wavelength detection
- Splitter and WDM troubleshooting
- Saw cut and riser guard examination
- Raw fiber location and continuity testing
- Ribbon fiber orientation testing
- New installation scanning

SPECIFICATIONS

Parameter	PX-Q650	PX-Q404
Emitter	Laser, FP, Class 1	Laser, FP, Class 1
Wavelength	1550nm	1500nm
Bandwidth	5nm	5nm
Power	<-1dBm	+5dBm
Modulation	500Hz	2kHz
Detector	InGaAs	N/A
Sensitivity (mode sensitive)	-85dBm, -75dBm, -40dBm	N/A
Operating Temperature	-5°C to 50°C	-5°C to 50°C
Storage Temperature	-10°C to 60°C	-10°C to 60°C
Battery	9V Alkaline	4-AA NiMH
Battery Life	24hr standby, 10hr typical usage	14hrs typical usage

ORDERING INFORMATION

PX-Q6XX Flashfinder®

Model	Description
PX-Q650	Flashfinder® Leak Detection Scope
PX-Q655	Flashfinder®LD Set: Probe (Q650), Scope & HiPwr +5 Tracer Source (Q404)
PX-Q656	Flashfinder® LD Set: Probe (Q650), Scope & Dual HiPwr +5 Tracer Source (Q424)
PX-Q657	Flashfinder® LD Set: Probe (Q650), Scope & VHiPwr +15 Tracer Source (Q410)

PX-Q4XX Flashpistol® and Flashfinder® Tracer Sources

Model	Description
PX-Q403	Single +1dBm 1550nm Tracer Source for Flashpistol® Probes
PX-Q404	Single +5dBm 1550nm Tracer Source for Flashpistol® Probes
PX-Q410	Single +15dBm 1550nm Tracer Source for Flashpistol® Probes
PX-Q424	Dual +5dBm 1550nm Tracer Source for Flashpistol® Probes
PX-Q434	Dual +5dBm, 1550nm / 0dBm, 650nm Tracer

PX-Q7XX Flashfinder® Accessories

Model	Description
PX-Q704	Head, 1550nm Filter
PX-Q716	Head, Aerial Lens/Scope
PX-Q721	Head, Fine point, 1550nm
PX-Q726	Head, Rigid, 3", 1550nm
PX-Q731	Head, Flexible 24", 1550nm
PX-Q752	Flashfinder® Carry Case

ENHANCED PRODUCT OVERVIEW

When troubleshooting fiber optic systems, it is often necessary to identify fibers or places where light is being lost from a fiber. Optical test sets and OTDRs are useful in finding the amount of loss or general loss locations, but to actually pinpoint a fault, a visible laser source has traditionally been the instrument of choice.

Visible laser sources inject red light into a fiber. Any red light that is visible indicates the fiber being tested, loss points, or breaks. The problems with visible lasers however are that they have a range of only a few miles, do not work with more opaque buffer colors (black, blue, green, etc.), and are not visible in well lit areas.

The Flashfinder™ leak detection probe solves these problems. This pistol type device looks for an INFRARED tracer signal which can carry up to 300km, penetrate most 250 and 900uM buffers regardless of color, and is detectable in bright light conditions.

PX-Q650 Flashfinder™ leak detection probe is designed to sense light three different ways.

Mode 1: Raw IR light detection

The “All IR” status indicator illuminates when any IR light hits the sensor at the tip of the probe. This includes communications traffic, strong room light, or sunlight. Its purpose is to detect IR light including traffic, tracer signals, or CW light. This allows identification of light at uncovered ports or to locate some severe bends and breaks in lightly colored fibers.



Mode 2: LOCAL tracer source light detection

The “Local” indicator (next to the 2kHz indicator at the rear of the unit) will illuminate only when the probe is sensing light from it's own internal source at the rear of the unit. This is the most sensitive mode of operation. Its purpose is to examine ports, fibers, splices or connectors for the presence of locally generated tracer light (from rear of probe). This mode is specifically for the detection of light leaks at the ends of a fiber link.

Mode 3: 2kHz remote tracer source light detection

The “2kHz Tracer” indicator at the rear of the probe will illuminate only when the probe is sensing a 2kHz modulated signal from the remote tracer source unit. This is the mode used in aerial fault finding applications. Light can be detected from any 2kHz light source operating between the wavelengths of approximately 1000-1700nm depending on the filter head employed but 1550nm light is recommended. Its purpose is to examine ports, fibers, splices or connectors for the presence of a 2kHz IR tracer light. This allows identification of light at uncovered ports up to 300km away or to locate severe bends / breaks in most 250 or 900um buffered fibers. This mode works throughout the length of a fiber link as well as at the ends.

ENHANCED APPLICATION OVERVIEW

Aerial damage location / verification



Aerial damage due to firearms, rodents, birds, or arcing can be detected using the or the PX-Q650 Flashfinder™ or the PX-Q550 Flashpistol® aerial leak detection probes. The PX-Q650 is specialized version of the PX-Q550 designed with a reverse handle configuration allowing it to more comfortably be held (similar to a video camera) for aerial fault location. The PX-Q650 incorporates a 1550nm specific long range lens head for remote light collection and a red-dot sighting scope for proper aim.

Damage can be located with the PX-Q650 in situations where the outer jacket of an aerial cable has been compromised and the broken fiber are fully or partially visible from the outside. Such damage occurs when the jacket is punctured by firearms, has been gnawed away by animals, or has been burned off with electricity.

Aerial damage location starts with an OTDR analysis to find the approximate location of the fault. A 2kHz tracer source is then connected to the same fiber the OTDR analyzed and the technician travels to the field site. Fault location with the PX-Q650 can be performed from ground level or discrete bucket locations.

Once on site, the technician should walk along the suspect length of cable sweeping in a side to side motion along the cable. This should be repeated from both sides of a run to increase the chance of detection. It may also be necessary to sweep along the cable from above in a bucket in case the damage is on top of the cable.

The Flashpistol® and scope are adjusted to place the red dot on the exact spot where leakage is being sought. Keeping the trigger squeezed, the technician should slowly move the red dot along the fiber and listen for either a tone or look for the red leak indicator to illuminate. The red dot and Flashpistol® aim are in perfect agreement at approximately 40' and there is approximately a 1-2' acceptance area at that distance.

Even in situations where a fault can not be located remotely, the PX-Q650 can be useful for verification of damage found by traditional methods. Once a suspected damage area is found in an outdoor cable, it can be scanned at close range with a standard head for tracer signal leakage. A detected tone serves as confirmation that the fiber is indeed damaged in the suspect region.

Fault location in dead zones

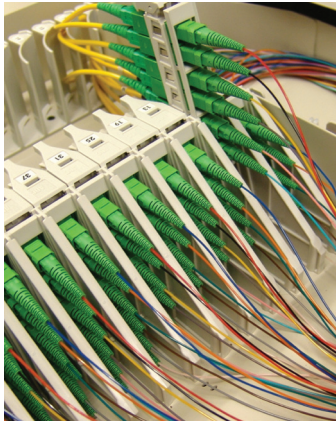
Similar to splice enclosure testing, the PX-Q650 Flashfinder™ leak detection probe is also well suited for fault location at either end of a fiber link, areas which generally fall within an OTDR “dead zone”. Once again, VFLs and fiber identifiers, with their limitations, have been the only fault pinpointing solutions to date. While VFL devices are more useful at either end of a link than in splice enclosures, they still have problems with bright ambient light and dark buffer colors such as black, blue, brown, and green.

The PX-Q650 is uniquely capable in this application as well. Using its built in infrared light source, the Flashfinder™ probe can detect leakage from not only breaks but bends in nearly all types of fiber buffers. Due to its extremely high sensitivity, only the PX-Q650 can also directly detect light leakage from broken splices, bulkhead adapters, broken or disengaged connectors, and fan-outs, even in bright ambient light conditions.



ENHANCED APPLICATION OVERVIEW

Fault location in splice enclosures and hubs



The PX-Q650 Flashfinder™ leak detection probe is the only product specifically designed to passively troubleshoot fiber optic splice enclosures and hubs. Pinpointing faults in mid-span splice enclosures and hubs after an OTDR has indicated a problem is traditionally more about guesswork than actually “locating”. The only two tools currently available, until now, have been the visible fault locator (VFL) and the fiber identifier.

VFLs are only effective over a few kilometers, in darkened conditions, and in fibers with lighter colored buffer coatings. These limitations make the VFL virtually useless in troubleshooting mid-span splice enclosures and outdoor hubs.

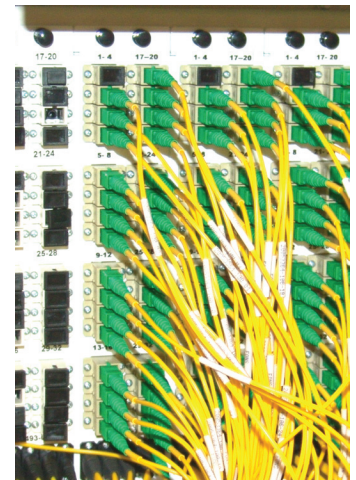
Fiber identifiers can locate some faults by process of elimination but require the user to physically clamp on a fiber in multiple locations to work toward a fault. This requires the highly risky technique of clamping strands intertwined among potentially dozens or hundreds of active strands.

The PX-Q650 does not require physical contact with fibers or splices to locate faults. The technician simply connects a tracer source in place of the OTDR, opens the splice enclosure, squeezes the PX-Q650 trigger, and scans over suspect areas. In a typical splice enclosure, the probe would be swept over breakout areas, over splice trays, under trays, and along routed strands. If leakage is detected, a tone will be heard and a red indicator LED will light at the rear of the unit.

Fiber tracing end to end (300km+)

Another common application for the PX-Q650 is end to end fiber tracing. Working in tandem with a 2kHz tracer source, the Flashfinder™ probe can trace fiber links with overall losses in excess of 70, 80, or even 90dB. This level of performance represents an ability to trace even un-amplified fiber spans well over 350km in length.

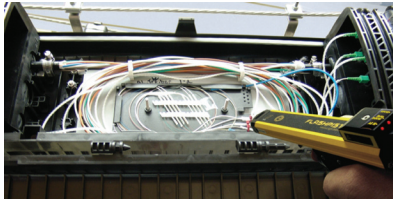
To trace a fiber, a 2kHz tracer signal is placed on the port of interest and the PX-Q650 is simply swept over output ports at the far end. The test technicians do not need to look for visible VFL laser light with the naked eye, sharply bend fibers with a fiber identifier, or physically connect to open ports with a meter. Again, because the PX-Q650 never makes contact with the output connector, there is no special cleaning or port inspection for every port tested. Hundreds of output ports can be scanned at a distance for tracer light in just seconds.



In situations where patch cords are connected to the output ports, simply bending patch cords over a finger will permit tracing. When used with Photonix high power tracer sources, the PX-Q650 can even trace ports through most plastic end caps or by connector bulkhead leakage.

ENHANCED APPLICATION OVERVIEW

Fiber tracing by mid-span leakage



Another application unique to Flashfinder™ leak detection probes is the ability to passively trace a fiber mid-span using splice or connector leakage. Whenever a tracer signal passes through a splice or connector interface, a small amount of light is scattered from that point even if the associated loss is not significant as with a broken splice or damaged connector.

Analyzing this tiny leakage, this can be useful when checking for the presence of a signal passing through a patch panel or splice enclosure or verifying a splice scheduled for rework. By checking one side and then the other of a fusion splice, the technician can determine if a tracer signal is passing through it and which direction it is moving in; the signal only appears on the leeward or exit side of a good splice. If significant light is detected on both sides of a splice, it is likely damaged.

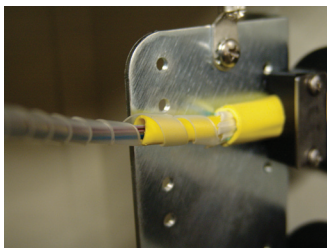
Fiber tracing by local bend

Bending a patch cord or buffered fiber over a wide mandrel or finger will extract enough tracer light from a fiber to permit detection with the PX-Q650. Such a minor bend, while enough to trace with, will induce far less attenuation in a fiber than the clamping heads on most fiber identifiers. This gentle bend is easier to perform in the field and is less likely to cause signal drop out on active fibers.

To test, attach a tracer source to the port of interest and simply bend the cord or cords under test over a finger to search for light leakage. Scanning over the bend, tracer signals may be detected and as with splice testing, direction can be determined by the location of scattered light.



Fiber bend and break pinpointing



The PX-Q550 was designed with a 10-20 degree acceptance cone for light at its receiver head. This means that the closer the PX-Q550 is to the fault, the more precise it is, accurate to 1/8" or less depending on the head installed. Conversely, it is possible to detect some faults from several meters away or more where the scanned surface can be over a meter in diameter. Therefore, when troubleshooting, it is best to start at a distance and work in toward a fault once a tone is detected. This technique will speed the process of fault location and may help discriminate between multiple loss points in a single enclosure.

Macrobends, microbends, and breaks in an optical fiber will all radiate light to varying degrees depending upon strength of the tracer source, distance to the fault, and buffer characteristics. Dark fiber buffers may attenuate light escaping from a fiber discontinuity by several more decibels than a light colored buffer. The PX-Q550 has variable gain to accommodate all common buffer styles.

Escaping light can sometimes be intense enough to cause the buffer or adjacent structures to glow or reflect ghost signals. Ghost signals can be useful in the initial phase of fault location in that they can help the technician to quickly find a general region of leakage even if the fault is not in direct view. For example, a break underneath a stack of splice trays might not be directly visible to the PX-Q550 but a glow coming from reflected light might be detectable. Glow scattering through a single plastic splice tray can indicate which tray contains a broken splice before un-strapping the entire stack. The PX-Q550 will readily detect such signals so it is a good idea to isolate a suspect strand to pinpoint damage once a tracer signal has been detected.

ENHANCED APPLICATION OVERVIEW

Connector damage detection

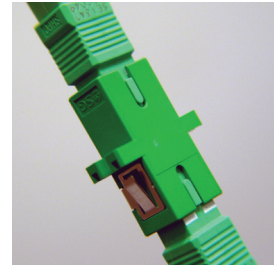


Damaged connectors can be detected with the PX-Q655 either engaged in a bulkhead adapter or standalone. A contaminated or damaged connector pair in a bulkhead adapter will not only attenuate light as seen by traditional test equipment, it will scatter a significant amount of light that the PX-Q655 can detect as a glow in and around a bulkhead adapter and the leeward connector boot area.

A connector not engaged in a system can still be checked if a tracer signal is present. A normally functioning connector will project light from its endface in a conical pattern roughly representing the acceptance cone of the fiber under test. Because of this fact, no light should be detected when a connector is viewed from the side. Connector endface contamination or internal damage will scatter light to the side of a connector where the PX-Q655 can it; a handy feature for times when a microscope is not available.

Bulkhead adapter troubleshooting

Similar to mated connector contamination or damage detection, the PX-Q655 will detect leakage radiating from around a bulkhead adapter if it has a damaged or contaminated alignment sleeve or if the connectors inside are not fully engaged with one another. IR radiation can be detected through many plastic bulkhead adapters or from the leeward boot areas of a mated connector pair.



Live port detection



The PX-Q655 includes an "All IR" indicator which illuminates in the presence of IR light greater than approximately -40dBm. This useful feature allows the test technician to simply point the Flashfinder™ probe at an open port or fiber endface to check for the presence of signal. This method is more reliable than using phosphor detection cards which are difficult to see. It is safer as well since the laminated cards can often reflect port emissions directly into the eye. Furthermore, since the Flashfinder™ probe is a non-contacting device, there is no need to clean and inspect patch cords and no risk of cross contamination or port damage.

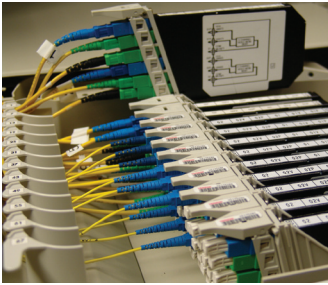
Wavelength detection

A feature associated with live port detection is the ability to discriminate between wavelengths during live port detection. The PX-Q655 has an interchangeable head design which allows the technician to swap out the standard broadband detection head for a narrow band filter head which will only pass 1310nm, 1490nm, 1550nm, or 1625nm light. By testing with a wavelength specific head, the technician can determine if that particular wavelength is present.



ENHANCED APPLICATION OVERVIEW

Splitter and DWM troubleshooting



Splitters can be checked for damage by scanning in a method similar to that used for fiber bend and break testing. In addition, ports can be checked end on for the presence of light or by bending output fibers over a finger or mandrel. Splitters with division ratios as high as 1:32 are verifiable in this way due to the high sensitivity of the PX-Q650. WDM devices can also be tested with the use of narrow band heads to verify proper wavelength diversion.

Saw cut and riser guard examination

In the field, rodent damage under telephone pole riser guards or conduit entrances can sometimes be detected using the optional PX-Q731 24" flexible adapter head. By pushing the tip of the flexible fiber bundle into the tube, it is possible to detect stray radiation scattered from rodent chew points.

A similar technique can be used to probe roadway saw cuts in instances where a conduit cut is suspected. Blowing out the test area with compressed air is sometimes helpful during this type of test.



Raw fiber location and continuity testing



Occasionally it may be necessary to locate specific strands of fiber in a bundle where the individual fibers cannot be identified by color code or numbering. Traditionally this task can be a time consuming process of clamping strands one at a time in a fiber identifier or using a bare fiber adapter to connect to a meter. The PX-Q650 can quickly locate a strand by separating a bundle into subgroups and scanning for tracer light. By breaking the detected group into smaller and smaller bundles, a single strand can be traced in seconds, even out of a cable with hundreds of fibers.

Ribbon fiber orientation testing

Vintage ribbon fibers sometimes have a problem with color code fading. This presents problems with restoration or splice repair when it comes to determining ribbon orientation. By placing a tracer signal on "fiber 1" at the CO or head end, the PX-Q650, fitted with a PX-Q721 fine point tip can be used to locate which strand is actually "fiber 1" in the field ribbon.



ENHANCED APPLICATION OVERVIEW

New installation scanning



During the initial installation phase of a fiber link, testing is often required to establish a baseline for future measurements. Such measurements are made with an optical power meter or OTDR and are useful in demonstrating loss performance in a link. The PX-Q550, while not a quantitative analysis tool, can be very useful in scanning a new installation for potential bends, breaks, or other “hot spots”. By connecting the internal laser of the PX-Q550 to a newly terminated fiber, the end enclosure can be scanned for light leaks and suspect areas can be scrutinized.